

Sokul Vanity Installation

TOOLS NEEDED:

- > 48" Level
- > Tape Measure
- > Stud Finder
- > Hammer
- > Power Drill With 15/64" and 1/8" Drill Bits
- > 9/16" Wrench or Socket
- > Ratchet with 1/4" Socket
- > T30 Torx Bit (Included)
- > 3/8" Hanger Bolt Driver (Included)

HARDWARE INCLUDED IN BOX:

- A  1.5" Washer (5pcs)
- B  5.5" 3/8-16 Hanger Bolt (5pcs)
- C  3/8-16 Grade 8 Flange Nut (5pcs)
- D  3/4"x1" Red Spring (5pcs)
- E  3" Lag Screw (5pcs)
- F  Plastic Shims

Pre-Installation

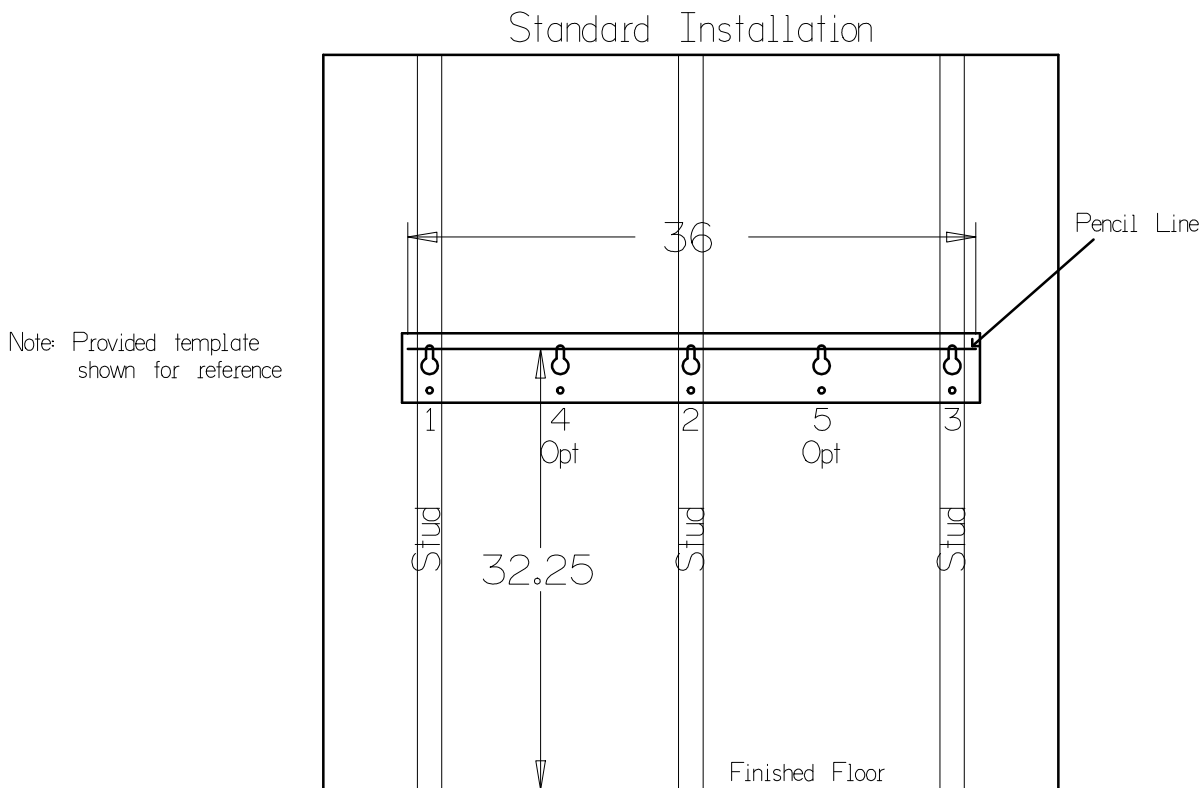
Note: ADA vanity height is used for this install, please refer to local codes if applicable

Step 1:

- > Using a stud finder, check for stud location and spacing between studs. IT IS VERY IMPORTANT TO HIT THE CENTER OF EACH STUD
 - > Your Sokul vanity has keyhole slots pre-milled for standard stud spacing of 16" on center

Step 2:

- > The standard installation involves mounting the vanity using 3 studs, support can be added to the wall to achieve 5 hole installation. Refer to Figure 1 below



Step 3:

- > Using a level and tape measure, draw a 36" line horizontally (18" from center left and right) 32.25" off the floor

Step 4:

- > Align the top holes of the template with the 36" pencil line and studs. Mark the top and bottom holes of the template for each stud.

Step 5:

- > Using a 15/64" drill bit, pre-drill holes 2.5" deep on each of the top marks on the 36" line. Then using a 1/8" drill bit, pre-drill holes 2" deep on each of the bottom marks. Refer to figure 2 below

Step 6:

- > Using the provided hanger bolt driver, drive the 5.5" hanger bolts 3" deep into each of the pre-drilled 15/64" holes leaving 2.5" of thread exposed from the wall. See figures 3 and 4.

Step 7:

- > Using the provided T30 torx bit, drive a 3" lag screw into each of pre-drilled 1/8" holes until the head is flush with the wall. When you are finished, you're wall will look like figures 3 and 4.

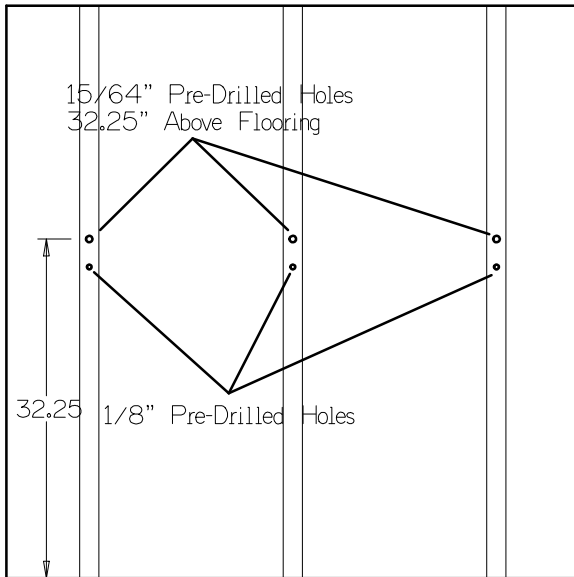


Figure 2

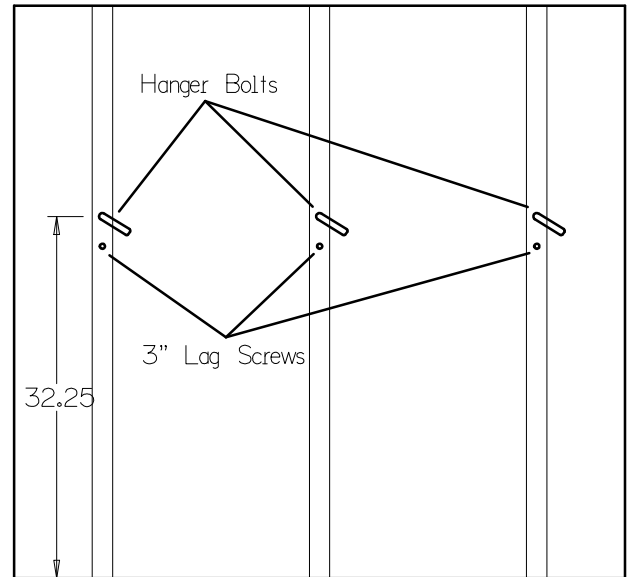


Figure 3

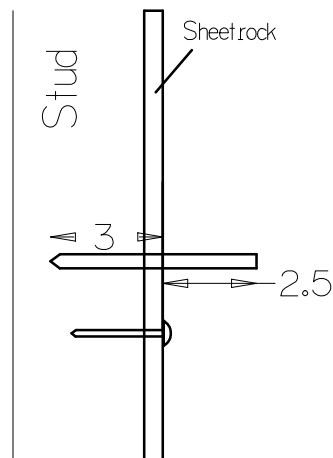


Figure 4

Installation

Step 1:

- > With assistance, slide the vanity over the hanger bolts into the keyholes in the back panel of the vanity. Allow the hanger bolts to settle at the top of the keyholes

Step 2:

- > Keeping the front of the vanity supported, install a 1.5" washer, red spring, and 3/8" flange nut onto each hanger bolt in that order. Tighten the nut using a 9/16" wrench until the spring is completely compressed. Refer to figures 5 and 6

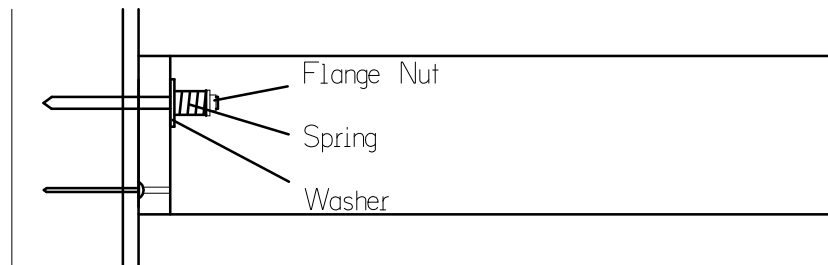


Figure 5

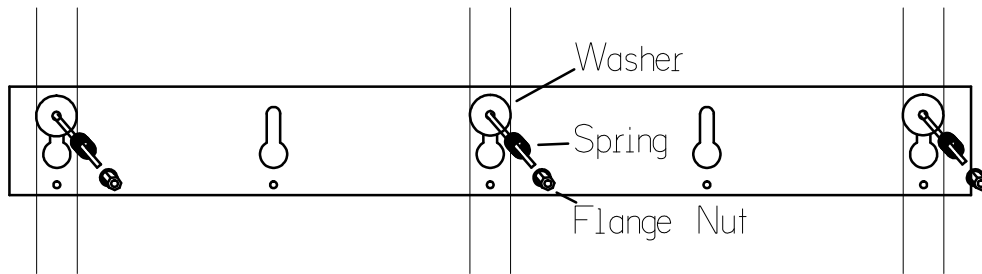


Figure 6

Step 3:

- > Place a level on the top of the vanity. Through the 1/2" pre-drilled hole in the back of the vanity, use a ratchet, 1/4" socket, and the provided T30 torx bit to slowly and evenly back the 3" lag screws out of the wall. This will lift the front of the vanity into a level position. Refer to figure 7 below.

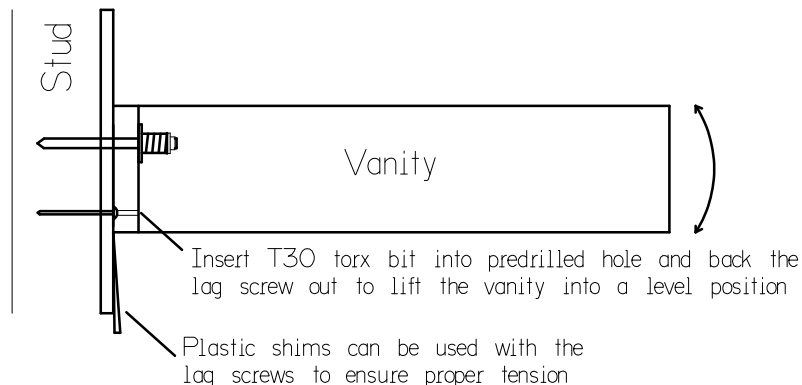


Figure 7

Determining Faucet Hole Layout

IT IS THE RESPONSIBILITY OF THE CUSTOMER TO DETERMINE
FAUCET HOLE CONFIGURATION!

To tap out a pre-drilled faucet hole, use a hammer and gently tap directly on the stickers placed on the vanity

Single Hole Installation: Tap out the center hole only - red sticker

4" Spread: Tap out the red and both blue stickers

8" Spread: Tap out the red and both green stickers

